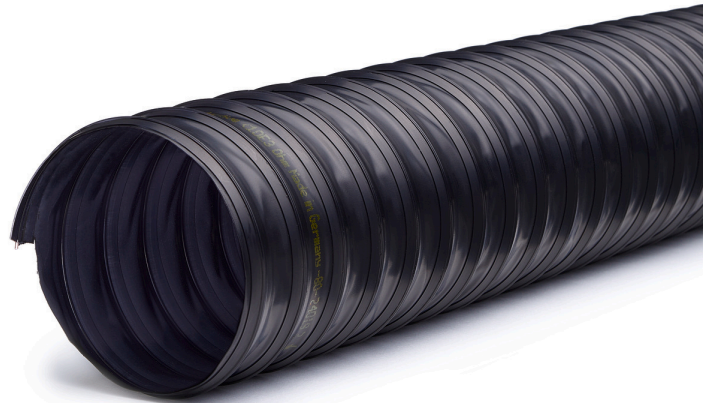


FLEXADUX® P 2 PE EL

Very light and highly flexible spiral hose made of Polyethylene, electrically conductive

- Applications** solvent vapor extraction, extraction systems, steam extraction, venting, ventilation
- Structure** PE, black / jet black (similar RAL 9005), steel wire / spring steel wire / not coated / copper plated
- Temperature** -40°C up to 60°C
- Properties** electrically conductive ($R \leq 10^3 \text{ Ohm}$), light weight, excellent flexibility, very good chemical resistance, free of halogen & softeners
- Norms** TRBS 2153/TRGS 727, ATEX 2014/34/EU / aspiration (no zone or inside: zone 22)



Inner Diameter (mm)	Wall Thickness (mm)	Bending Radius (mm)	Max. Working Pressure (bar)	Max. Vacuum (bar)	Weight (kg/m)	Article Number
50	0,40	35	0,40	0,16	0,12	28005050
60	0,40	42	0,40	0,16	0,15	28005060
70	0,40	49	0,30	0,12	0,17	28005070
75	0,40	53	0,30	0,10	0,18	28005075
80	0,40	56	0,30	0,10	0,20	28005080
90	0,40	63	0,25	0,09	0,22	28005090
100	0,40	70	0,20	0,09	0,30	28005100
110	0,40	75	0,20	0,08	0,33	28005110
125	0,40	85	0,20	0,08	0,37	28005125
150	0,40	100	0,20	0,06	0,44	28005150
160	0,40	110	0,20	0,05	0,47	28005160
175	0,40	125	0,10	0,05	0,76	28005175
200	0,40	140	0,09	0,05	0,87	28005200
250	0,40	175	0,08	0,04	1,08	28005250